

FOGR MONTHLY

News about the Gualala River and Watershed



July Celebrations

This month let's recognize not just the birth of our nation, but the fruition of the Mill Bend Conservation Project which encompasses the Gualala River Estuary and northern shore of the riverbank.

Join the festivities by visiting any area on the Mill Bend map and enjoying a refuge where you can view Osprey, Eagles and Mergansers fishing for a meal, multitudes of butterflies visiting native wildflowers, perhaps a Gualala Roach, a fish endemic to the Gualala River, Foothill Yellow-legged frogs, river otters frolicking or spot a Spotted Sandpiper. If you are really quiet, you might see a Western Pond Turtle. Keep that camera handy!



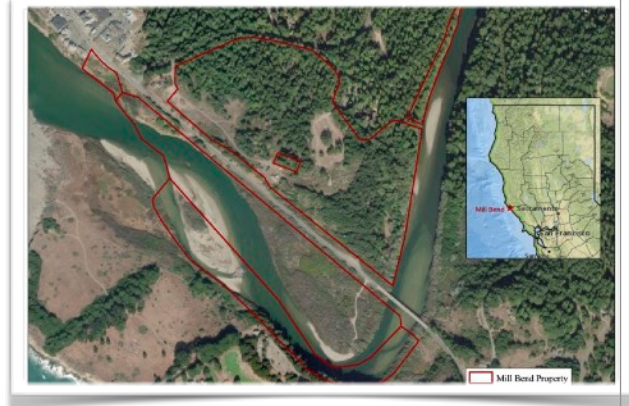
Western Pond Turtle by Peter Baye

A few more suggestions

- Visit the historic Gualala cemetery and read the headstones of the people who lived in the area over 100 years ago.
- Rent a Kayak from Wayne at [Adventure Rents](#) located just North of the Bridge into Gualala. It's a unique way to experience the river.
- Take a hike along the river or gaze down on it via the nearly 3 miles of [trails in the Gualala Regional Park](#).

This month features Mill Bend

Redwood Coast Land Conservancy, RCLC, is a close ally of FoGR, as both are working to protect the Gualala River. This year, RCLC completed the purchase of the Mill Bend Property.



The areas outlined in red in the above map show the preserve and its borders along the river and its estuary.

It's through the efforts of organizations like FoGR & RCLC that river habitats are being preserved for future generations



While you enjoy exploring Mill Bend, consider entering the Redwood Coast Land Conservancy photography contest.



Give your input about the future of Mill Bend by taking [RCLC's Survey](#)